



## Fact Sheet

### A SELECTIVE HERBICIDE FOR CONTROLLING CERTAIN UNWANTED AQUATIC PLANTS

- **NAVIGATE<sup>®</sup>** selectively controls: water milfoil, waterstargrass, coontail, water shield, water chestnut, spatterdock and other aquatic plants as specified on the product label. It is **especially** effective in controlling **Eurasian watermilfoil**, an aggressive, exotic species found throughout the U.S.



**Eurasian Watermilfoil**



**Coontail**

- **NAVIGATE<sup>®</sup>S** selectivity allows desirable, native aquatic species to remain for fish habitat, bottom cover and oxygen production.
- **NAVIGATE<sup>®</sup>** is a low volatile, butoxyethyl ester formulation of 2,4-D (27.6% active) designed specifically for selective control of nuisance aquatic vegetation.
- **NAVIGATE<sup>®</sup>S** efficient release of 2,4-D from the clay granule carrier and its systemic action ensures active plant uptake for complete and effective control of target plants.
- **NAVIGATE<sup>®</sup>** provides optimum results when used in spring or early summer. It controls plants before they surface and inhibit water use.
- **NAVIGATE<sup>®</sup>S** foil bag resists water and tearing plus reduces odor during storage and transport.
- **NAVIGATE<sup>®</sup>** is a proven, useful "tool" in the management of aquatic plants, complementing the other quality surface water products available from Applied Biochemists, Inc.

ALWAYS READ AND FOLLOW ALL LABEL PRECAUTIONS AND DIRECTIONS. PERMITS MAY BE REQUIRED IN SOME STATES FOR USE OF THIS AND OTHER AQUATIC HERBICIDES AND ALGAECIDES. CONSULT YOUR STATE AUTHORITIES PRIOR TO USE.



Germantown, WI 53022  
1-800-558-5106  
[www.appliedbiochemists.com](http://www.appliedbiochemists.com)

# UPDATE INFORMATION FOR APPLIED BIOCHEMISTS':



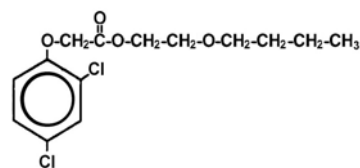
A SELECTIVE HERBICIDE FOR CONTROLLING CERTAIN UNWANTED AQUATIC PLANTS

## ACTIVE INGREDIENTS:

Butoxyethyl ester, 2,4-Dichlorophenoxyacetic acid, .....27.6%

## Improved Packaging

**Navigate**<sup>®</sup> is packaged in a new water-resistant foil bag. The improved strength also resists tearing and loss of product, a common problem with wet paper bags. An added benefit is reduced odor in storage and during transport.



Butoxyethyl ester,  
2,4-Dichlorophenoxyacetic acid

## Label Clarification

The water use restrictions for **Navigate**<sup>®</sup> have changed to allow immediate irrigation of non-susceptible crop and non-crop plants. New limits have also been set to allow for irrigation of susceptible plants and drinking water use after levels have dropped to stated concentrations.

## New label statement:

Unless an approved assay indicates the 2,4-D concentration is 100 ppb (0.1 ppm) or less, or, only growing crops and non-crop areas labeled for direct treatment with 2,4-D will be affected, do not use water from treated areas for irrigating plants or mixing sprays for agricultural or ornamental plants. Unless an approved assay indicates the 2,4-D concentration is 70 ppb (0.07 ppm) or less, do not use water from treated areas for potable water (drinking water).

## What does this mean to the applicator?

Unless otherwise specified by your state, the applicator will need to list the above label statement on the water use restrictions signs posted at the time of **Navigate**<sup>®</sup> application under the irrigation/household use/animal warning section. A pre-printed sticker can be used to simplify the posting procedure.

## What does this mean to the property owner?

This means that water from **Navigate**<sup>®</sup> treatment areas can be used immediately to irrigate plants such as: lawns/turf (grasses, bent grass, creeping grass varieties, etc.), wheat and small grains, barley, sorghum, corn, rice, sugar cane, etc. (Note: these ornamentals and crops are listed as use sites for other 2,4-D products). As always, there are no restrictions for swimming or for consuming fish from the treatment area. If a property owner wishes to irrigate susceptible plants, a test must be performed to ensure levels have dropped below label limits, or a suitable alternate water source must be used. Field observations have shown in shoreline and large area treatments, levels dropped below detection limits (less than 1 part per billion) in less than two weeks. The following are analytical field observations noted from three different applicators during the 2002 season:

- Wisconsin lake: shoreline treatment at 100 lbs. **Navigate**<sup>®</sup>/acre  
2,4-D concentrations were non-detectable when measured 14 days after application
- Minnesota lake: shoreline treatment at 100 lbs. **Navigate**<sup>®</sup>/acre  
2,4-D concentrations were non-detectable when measured 14 days after application
- Colorado lake: 5.5 acre treatment of a 10 acre lake at 100 lbs. **Navigate**<sup>®</sup>/acre  
2,4-D concentrations were non-detectable when measured 14 days after application

All test samples were taken in middle of treated areas in approved containers and analyzed in an independent analytical lab utilizing SDI RapidAssay tests.

A partial list of plants susceptible to 2,4-D include: nightshade, poison-ivy, brambles, greenbriar, tomato, pepper, eggplant, potato, grape vines, hardwood saplings and Japanese honeysuckle. If in doubt about a terrestrial plant's susceptibility to 2,4-D, check 2,4-D lawn and garden product labels for plants controlled. Aquatic plants are listed on **Navigate**<sup>®</sup>'s label.